

Standard-documentation Meta information

(Definitions, comments, methods, quality)

on

Microcensus – Ad-hoc module 2014 „Labour market situation of immigrants and their immediate descendants“

This documentation is valid for the reference period:

2014

Status: **26.01.2016**



STATISTICS AUSTRIA
Bundesanstalt Statistik Österreich
A-1110 Vienna, Guglgasse 13
Phone: +43-1-71128-0
www.statistik.at

Directorate Social Statistics
Organizational unit Demography, Health, Labour Market

Contact person:
Mag. Beatrix Wiedenhofer-Galik
Phone +43-1-71128-8287
E-Mail: beatrix.wiedenhofer-galik@statistik.gv.at

Executive Summary

Following the [Commission Regulation \(EC\) No. 220/2010](#) the LFS ad-hoc module on the labour market situation of immigrants and their immediate descendants had to be carried out in 2014. This Regulation contains the topics of the LFS modules concerning the years 2013 to 2015. An Agreement of the European Statistical System ([ESS Agreement](#)) determines a detailed list of variables to be collected in 2014. The concrete formulation of the questions and a possible enlargement of the questionnaire can be determined by the EU Member States, nevertheless it has to correspond to the European model questionnaire as far as possible. The Austrian Labour Force Survey is implemented according to the national Regulation on Employment and Housing Statistics ([EWStV, BGBl. II Nr. 111/2010](#)). The questions related to the LFS module 2014 were added after the core program of the LFS. The module was only addressed to those households, who were interviewed for the first time within the Microcensus. Answering the questions of the LFS module 2014 was compulsory, as it is the case for the core program.

At national as well as European level data concerning migration is of high priority. In response to political needs, several initiatives have been launched according to the corresponding statistics. The Europe 2020 strategy emphasizes the need for increasing participation of all population groups in the labour market. Another decision taken at European level was the implementation of the LFS module on the labour market situation of migrants and their immediate descendants in the EU Member States. In 2008 a module concerning this topic was carried out within the LFS for the first time. Main findings obtained from the module 2008 were included in the new survey, which was conducted in almost all EU Member States.

In order to receive more detailed information concerning the integration of persons with foreign background into the Austrian labour market, additional questions were included in the national module questionnaire. These supplementary questions are based on a national Regulation, namely the [„Statistik über die Arbeitsmarktsituation von Zuwanderern und ihren direkten Nachkommen im Jahr 2014, BGBl. II Nr. 496/2013“](#), legislated by the Austrian Federal Ministry of Labour, Social Affairs and Consumer Protection. In § 4 (1) of this Regulation it is stated, that the participation at the module was compulsory. These additional national variables were financed by the Austrian Federal Ministry.

The sample frame for the Austrian LFS module 2014 was represented by the Microcensus sample of 2014. The sample of the Microcensus consists of nine approximately equal-sized federal state samples (exceptions: Burgenland with a smaller sample size and Vienna with a larger sample size). Households are the primary sampling unit and they are selected randomly in a one-step sample from the “Zentrales Melderegister” – ZMR (i.e. register of residents). Each household remains for five surveys in the sample (fifth rotation). The first survey is carried out by face-to-face interview (CAPI, Computer Assisted Personal Interviewing). The four follow-up surveys are carried out by Computer Assisted Telephone Interviewing (CATI).

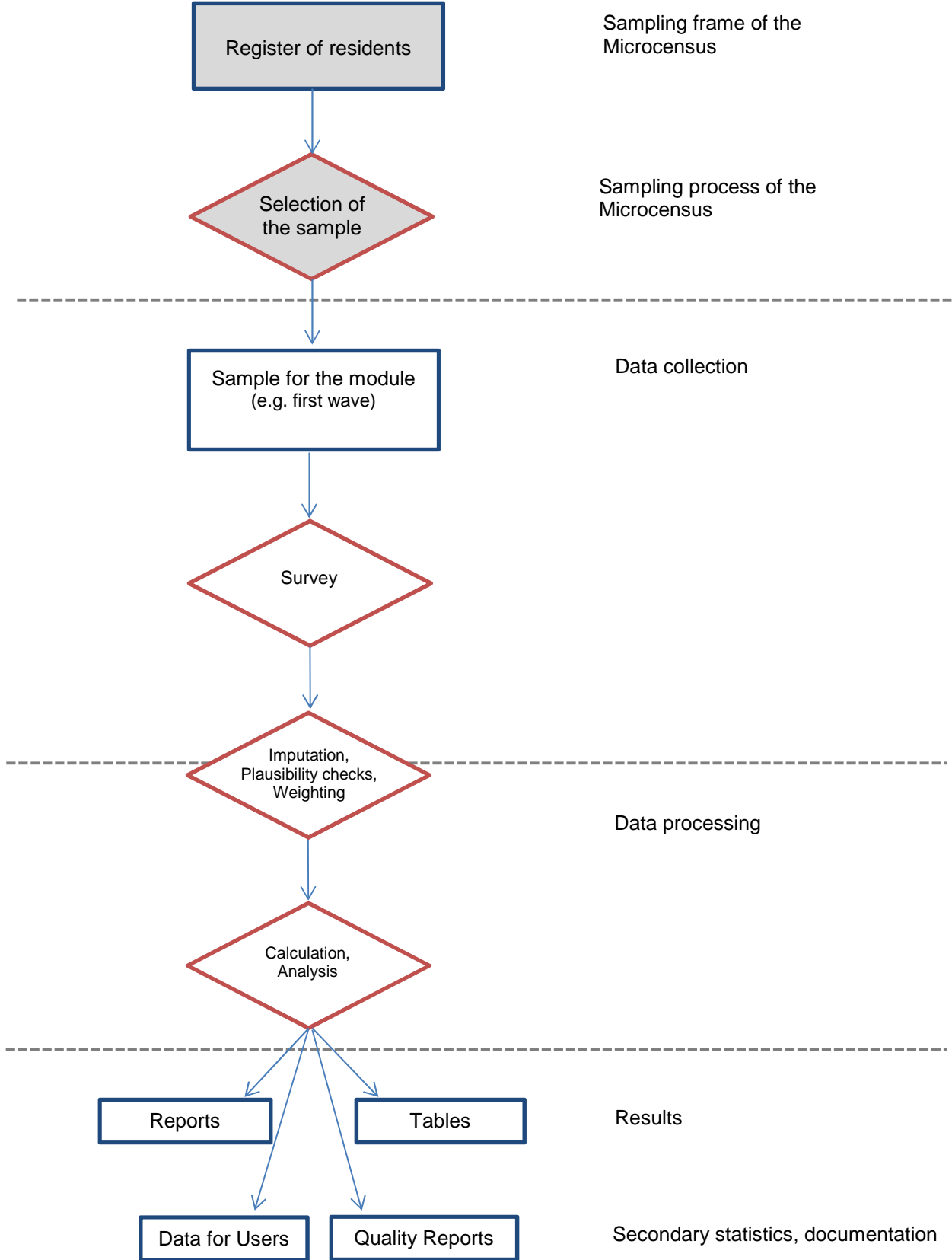
Target group of the LFS module 2014 consisted of all persons aged 15 to 64 years living in private households, who were interviewed for the first time (first wave) in the frame of the Labour Force Survey. As answering the survey was compulsory, the response rate was 99,9%. In 2014, 23,463 persons answered the module, thereof 4,134 foreign born. Proxy interviews by other household members were – as in the core program – allowed. The share of proxy interviews amounted to 28.1% of the target group. The interviews were spread over all calendar weeks of the year 2014.

The collected data was checked for completeness and plausibility. Subsequently, implausible and missing data were imputed by hot deck method. Finally, as well as concerning the core program of the labour force survey, survey weights were calibrated so that the results of the ad-hoc module agree to known population totals.

The results of this ad-hoc module were published in the publication [„Arbeitsmarktsituation von Migranten und Migrantinnen in Österreich. Modul der Arbeitskräfteerhebung 2014“](#) (labour market situation of migrants in Austria, LFS module 2014) in November 2015.

Figure 1 describes the process of data production within the framework of the Microcensus labour force survey. In this standard publication, the individual steps from sampling to the presentation of the results are explained in more detail.

Figure 1: Process of data production of Ad-hoc-Module 2014 data



Microcensus – Ad-hoc-Module 2014 “Labour market situation of immigrants and their immediate descendants” – Main Features

Subject Matter	Survey regarding reasons for last migration, educational attainment of parents, recognition of educational qualifications attained abroad, drop-out or low education, language skills, work experience in a foreign country, access to the labour market, occupation according to qualifications
Population	Persons aged 15 to 64 years living in private households (2014: ca. 5.7 m persons)
Type of statistics	Primary statistics
Data sources/Survey techniques	Sample survey: computer-assisted
Reference period or due day	2014
Periodicity	Ad hoc
Survey participation (in case of a survey)	Obligatory
Main legal acts	National: Statistik über die Arbeitsmarktsituation von Zuwanderern und ihren direkten Nachkommen im Jahr 2014, BGBl. II Nr. 496/2013 EU: Commission Regulation (EU) No 220/2010 adopting the programme of ad-hoc modules, covering the years 2013 to 2015, for the labour force sample survey Agreement of the European Statistical System (ESS Agreement) specifying the detailed information to be collected in 2014 related to the labour market situation of migrants and their immediate descendants
Most detailed regional breakdown	NUTS 2
Availability of results	30 November 2015
Other	Partial Sample